

# Deliver the Highest Quality – On Time – With Less Risk

Helix ALM is a unified requirement and test management platform that delivers end-to-end traceability throughout your project and product lifecycles.



## Streamline Your Process with Helix ALM

Delivering the highest quality possible can be a challenge as release cycles get shorter and shorter.

If you're lacking visibility and alignment around requirements and testing, you're putting quality, safety, compliance, and your brand reputation at risk.

Helix ALM provides a single tool to centralize, map, and manage all project & product development artifacts across the entire lifecycle. So you can streamline your process and get to market on time – without compromising quality.

- Improve visibility & gain insight around requirements and changes to **reduce risk & increase efficiency**.
- Ensure comprehensive testing is traced back to requirements to **improve product quality & safety**.
- Gain confidence in the status of project health to **accurately report on quality findings at any time**.
- Automate continuous, end-to-end traceability to **prove compliance and pass audits with ease**.

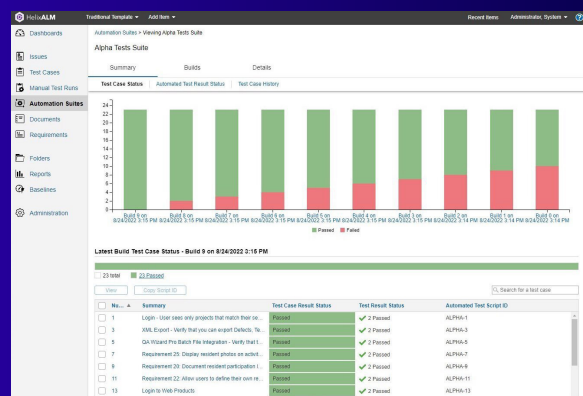
### See What Our Customers Have to Say About Helix ALM\*:



**68% of customers realized a return on their Helix ALM investment within one year.**

**100% realized ROI within two years.\***

**Helix ALM lets you manage requirements, testing, and issues – all in one spot.** With a flexible, modular structure, you can map your preferred processes and continuously improve them over time.



## Requirements Management (RM)

Requirement changes and scope creep can negatively impact your project timeline, budget, and quality. With Helix ALM, you can better control the complete requirement lifecycle.

- Centralize & organize requirements to keep teams aligned and projects moving forward.
- Streamline planning, workflow, review, change management, and reporting in one place.
- Automate traceability and trace requirements to test cases to ensure quality & safety.

## Test Case Management (TCM)

Testing complex products requires thousands of unique test cases and the ability to efficiently manage the results. Helix ALM helps you streamline all types of testing in a single tool to achieve a holistic testing strategy.

- Create, execute, and track thousands of test cases – both manual & automated – with ease.
- Identify issues earlier in the cycle to fix them faster & more

efficiently with minimal rework.

- Trace test results back to requirements to ensure comprehensive test coverage.

## Issue Management (IM)

When the bug counts are in the thousands, issue management can take massive amounts of time and energy. Gain control of issue management with Helix ALM.

- Create, prioritize, and manage high volumes of issues, defects, tasks, feature requests, and more.
- Analyze and mitigate risks and keep all stakeholders up-to-date on issue status.

## Helix ALM Works the Way You Do

While Helix ALM is an integrated solution, its RM, TCM, and IM modules can also be used independently to help reduce up-front costs. Start with one module and grow into the solution at your own pace, while ensuring traceability & compliance along the way.

Learn how you can deliver the highest quality with less risk with **Helix ALM**.

## Key Integrations



**Jenkins**



**Jira**



**git**



**slack**